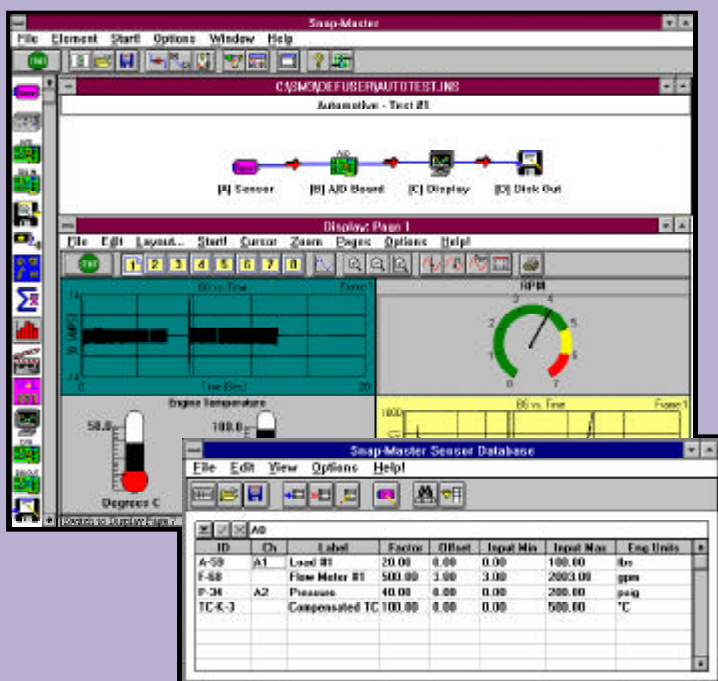




Data Acquisition

Snap-Master™ is a complete software package designed for engineers and scientists who need to acquire test data quickly. From sensor management to presentation and reporting, Snap-Master makes data acquisition easy to manage. Unlike other software which requires months to learn, Snap-Master's easy flow-chart approach has you acquiring your data in minutes.

Snap-Master's extensive I/O hardware support from over 15 leading manufacturers means we probably support the hardware you already own (be sure to contact us because our list is continually growing). This wide array of choices lets you measure all types of data, including thermocouples, strain gauges, voltages, currents, and more. Mix and match multiple hardware products with multiple vendors. With support of over 350 analog and digital I/O hardware models, PCMCIA cards, USB or parallel base devices, Snap-Master makes it all work for you.



INTEGRATED SENSOR MANAGEMENT

Snap-Master is the easiest software to manage the entire acquisition process from start to finish. Most real-world tests start with a sensor, so Snap-Master incorporates a Sensor Database which automatically converts your data to engineering units (rpm, psi, degrees, etc.) The centralized database tracks calibration history to ensure the scaling data is accurate, up to date, and traceable for all of your sensors. Best of all, it eliminates the redundant operator entry of sensor information prior to each test. Ask us about the *Sensor Assistant* which automatically calibrates sensors to determine scale and offset factors, and generates calibration reports.

PRESENT YOUR RESULTS

Snap-Master effectively displays your results with its industry leading graphics, which *BYTE* magazine rated "second to none." Choose from a variety of display types with advanced features like strip-chart emulation, multiple y-axes, data cursors and text markers to visually mark important data points. Snap-Master works for you, from real-time displays through report generation.

SHARE YOUR DATA

Snap-Master makes it easy to share your test data by supporting Windows™ standards to retrieve, transfer, or store data. Comma separated variable (CSV) file support lets you import or export data to other programs, and the built-in binary format is great for high speed data storage. With Snap-Master's copy/paste/link DDE method, real-time communication with other Windows programs has never been easier.

"Snap-Master has redefined user friendly data acquisition. Its sophistication is expressed in power, simplicity of use, and in great customer support."

- Peter O. Paulson, Yellowbird Products

Real-World Data Acquisition Solutions

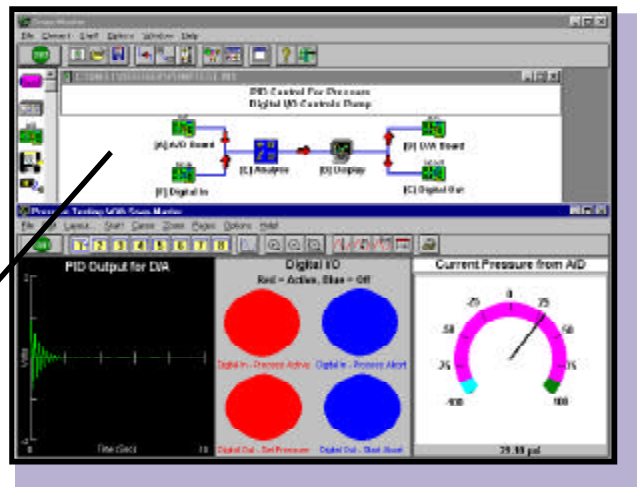
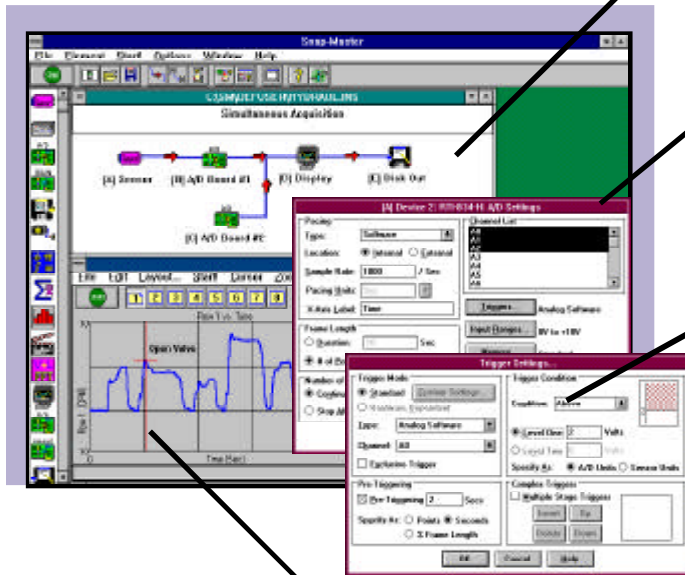
BETTER TOOLS

As engineers, you continually strive to find a better way to improve product design or maximize system performance. We as engineers utilize the same thinking to provide you with the best tool for data acquisition. So why reinvent the wheel by writing code when Snap-Master already combines power and flexibility to get your job done in a fraction of the time? It's your fastest route to acquire, display, and store your test data.

1 The instrument window defines the functionality for the test. Each icon represents a specific function, and the data pipes define the data flow between the functions. It's this easy, even when acquiring data simultaneously from multiple input cards or boxes.

2 Simply double clicking on the icon brings up a dialog box or table with the settings for each function. Because each icon represents an *entire* function, "icon overload" is avoided. For example, a single A/D icon controls 1, 2, or up to 256 channels.

3 Advanced triggering lets you define pre-trigger criteria to capture up to 8 million data points prior to a major event. This is especially helpful during long-term durability and reliability testing, or to catch that intermittent problem!



4 Powerful display options let you customize the plot types you want. Zoom in on data, annotate specific points with text markers, and read data values using cursors.

5 In addition to analog input (A/D), Snap-Master supports counter timers, digital I/O and analog output (D/A) for control purposes and waveform generation.

Data Acquisition Features

- Acquire and store data from 1 sample/hr to 1 Msample/sec
- Extensive I/O hardware support
- Real-time display to 110Ksample/sec: meters (bar, dial, digital), plots (Y-T, Y-X), histogram
- File I/O: (CSV, ASCII, Binary formats)
- Arbitrary and Function Waveform Generation (11 functions: sine, square, sawtooth, triangle, cosine, ramp, etc.)
- DDE In and Out
"Unusually flexible DDE is a hallmark of Snap-Master for Windows..."
- *Personal Engineering and Instrumentation News*

System Requirements

- Microsoft® Windows™ XP, 2000, NT, Me, 98
- Only 5 MB Hard Disk Space
- Pentium II or Higher



17320 12 Mile Rd., Southfield, MI 48076 U.S.A.
Phone:(248)559-5607 Fax:(248)559-8008 www.hemdata.com



CALL 1-800-HEM-4330 TODAY FOR YOUR FREE DEMO DISK